



RESEARCH CULTURE AND PROMOTION

**GOVERNMENT COLLEGE JAITHARI,
DISTRICT- ANUPPUR (M.P.) INDIA**

POLICY

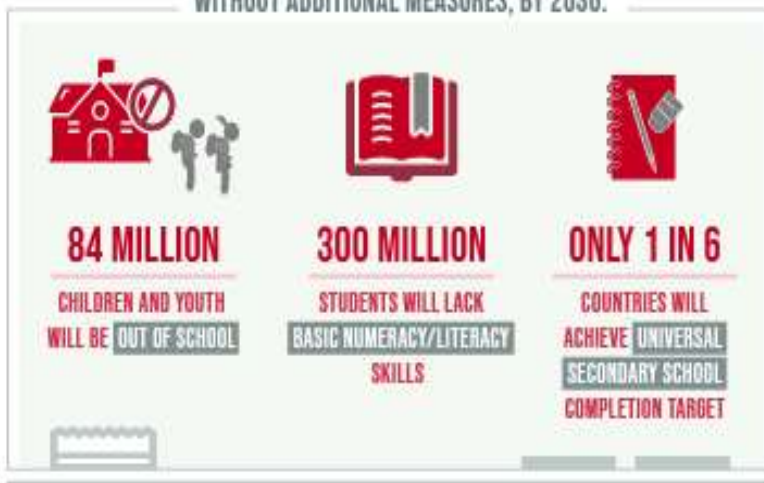


ENSURE INCLUSIVE AND EQUITABLE QUALITY EDUCATION AND PROMOTE LIFELONG LEARNING OPPORTUNITIES FOR ALL

DESPITE SLOW PROGRESS,

THE WORLD IS FALLING FAR BEHIND IN ACHIEVING QUALITY EDUCATION

WITHOUT ADDITIONAL MEASURES, BY 2030:

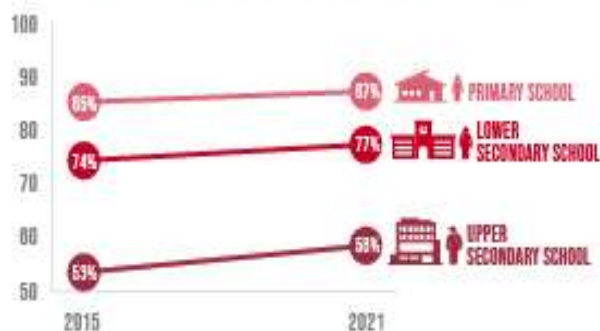


THE PANDEMIC

CAUSED LEARNING LOSSES IN **4 IN 5** OF 104 COUNTRIES STUDIED

PRIMARY AND SECONDARY SCHOOL COMPLETION RATES ARE **RIISING**, BUT THE PACE IS SLOW AND UNEVEN

COMPLETION RATES



LOW- AND LOWER-MIDDLE-INCOME COUNTRIES FACE A NEARLY

\$100 BILLION

ANNUAL FINANCING GAP

TO REACH THEIR EDUCATION TARGETS



Mr. Ashok Kumar Rathour

Adhyaksh

Janbhagidari Samiti Govt. College Jaithari, Anuppur (M.P.)

Forward



Dear Esteemed Members of Government College Jaithari,

As the Adhyaksh of the Janbhagidari Samiti of Government College Jaithari, District Anuppur, Madhya Pradesh, it gives me immense pleasure to present this foreword to our comprehensive College Policy. Since our institution's establishment in 2012, we have been on a journey of growth, learning, and community engagement. This policy document marks another significant milestone in our college's development.

The Janbhagidari Samiti, or Public Participation Committee, plays a crucial role in bridging the gap between the college and the community. Our committee's vision aligns perfectly with the college's mission to provide quality education while fostering a sense of social responsibility among our students.

This College Policy is a testament to our collective efforts to create an institution that not only excels in academics but also prepares students to be responsible citizens. It encompasses various aspects of college life, from academic standards to community outreach programs, reflecting our commitment to holistic education.

I urge all stakeholders - students, faculty, staff, and community members - to embrace this policy wholeheartedly. It is through your active participation and adherence to these guidelines that we can truly realize the potential of our institution.

As we move forward, let us remember that the strength of our college lies in the spirit of 'Janbhagidari' - public participation. This policy is not just a document, but a shared vision for our college's future. Together, we can build an educational institution that serves as a beacon of knowledge and social progress in our region.

I look forward to your continued support and cooperation in implementing this policy and in furthering the growth of Government College Jaithari.

Sincerely,

**Mr. Ashok Kumar Rathour
Adhyaksh- Janbhagidari Samiti
Govt. College Jaithari
District Anuppur, (M.P.)**



Dr. Ramesh Singh Wate

Principal

Govt. College Jaithari, Anuppur (M.P.)

Forward



Dear Students, Faculty, and Staff,

As the Principal of Government College Jaithari, District Anuppur, Madhya Pradesh, it is my privilege to present our comprehensive College Policy. This document serves as a cornerstone for our institution, outlining our vision, mission, and the guiding principles that shape our academic environment.

Our college policy is designed to foster an atmosphere of academic excellence, personal growth, and social responsibility. It reflects our commitment to providing quality education while nurturing the diverse talents of our students. The policy encompasses various aspects of college life, including academic standards, code of conduct, extracurricular activities, and community engagement.

I encourage all members of our college community to familiarize themselves with this policy. It is not merely a set of rules, but a roadmap for our collective success. By adhering to these guidelines, we create a harmonious and productive learning environment that benefits everyone.

As we move forward, let us embrace these policies with enthusiasm and dedication. Together, we can build a college that not only imparts knowledge but also shapes responsible citizens who will contribute positively to society.

I look forward to working with all of you in upholding the high standards set forth in this policy and in continually striving for excellence in all our endeavors.

Sincerely,

Dr. Ramesh Singh Wate
Principal
Govt. College Jaithari
District-Anuppur (M.P.)

Govt. College Jaithari, Anuppur M.P.

Department of Higher Education M.P.

Research Culture and Promotion Policy

1. Introduction

The Research Culture and Promotion Policy outlines the commitment of Government College Jaithari, Anuppur (M.P.) 484330 to foster a culture of research and innovation. This policy aims to establish a supportive and inclusive environment that encourages high-quality research, promotes intellectual curiosity, and contributes to the broader academic community.

2. Objectives

- To foster a culture of research and scholarly inquiry within the college community.
- To promote and support high-quality, ethical, and impactful research.
- To encourage interdisciplinary and collaborative research.
- To provide appropriate resources and support for researchers.
- To recognize and reward research excellence.
- To ensure compliance with all relevant laws and regulations.

3. Promoting a Research Culture

- 3.1 The college will actively promote a culture of research and innovation among students, faculty, and staff.
- 3.2 The college will facilitate interdisciplinary and collaborative research by providing platforms for communication and collaboration.
- 3.3 The college will organize regular seminars, workshops, and lectures to enhance the research skills of the college community and to expose them to cutting-edge research in various fields.

4. Support for Researchers

- 4.1 The college will provide appropriate resources and support to facilitate research, including access to literature, data, research equipment, and funding where possible
- 4.2 The college will provide training and development opportunities to enhance the research skills of faculty and students.
- 4.3 The college will offer guidance and support in the publication and dissemination of research findings.

Prepared By:- Dr. Shobha Tiwari

Verified By:- Mr. Rajkumar Singh

**Coordinator IQAC
Govt. College Jaithari**

**Principal
Govt. College Jaithari
Anuppur (M.P.) 484330**